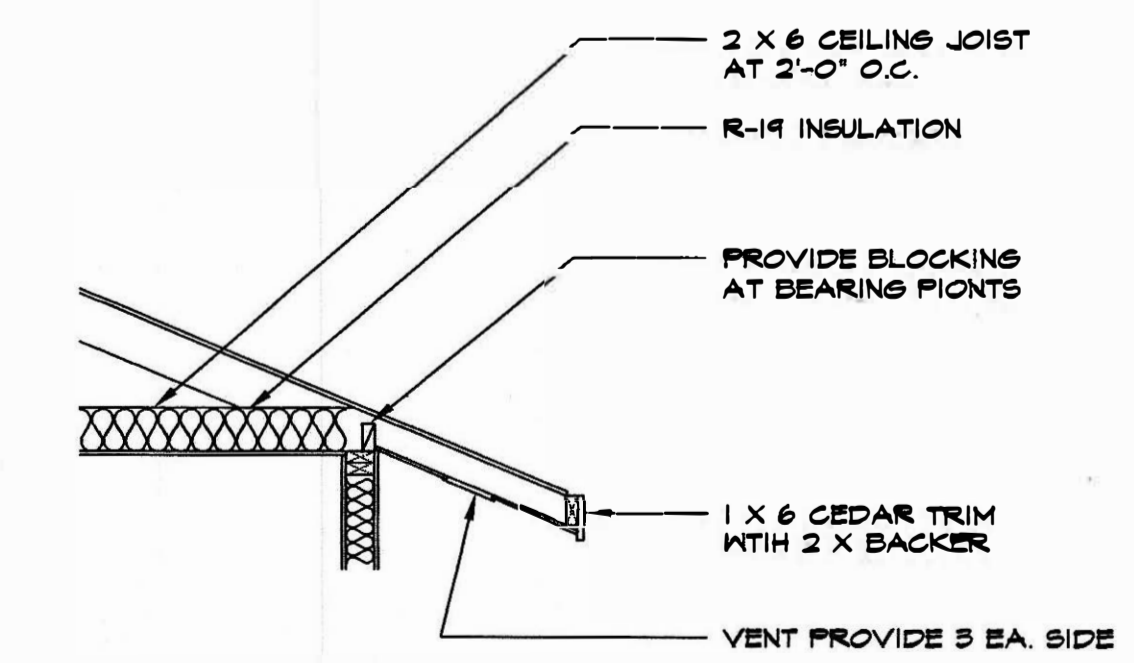
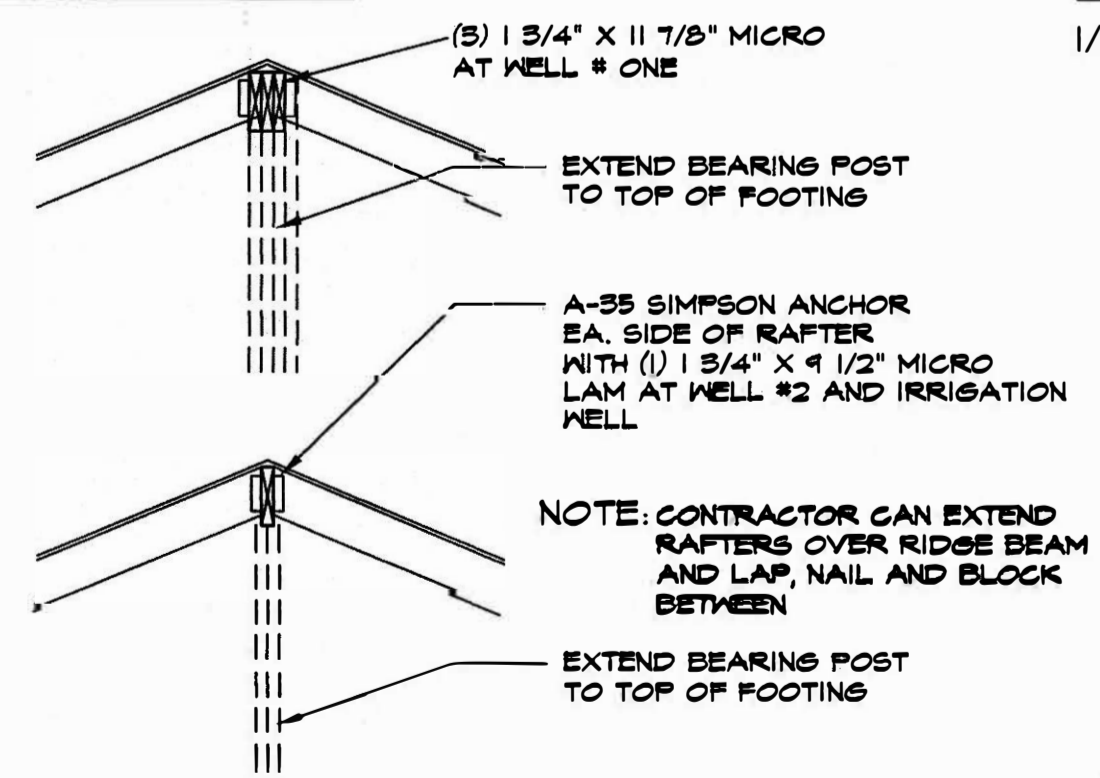
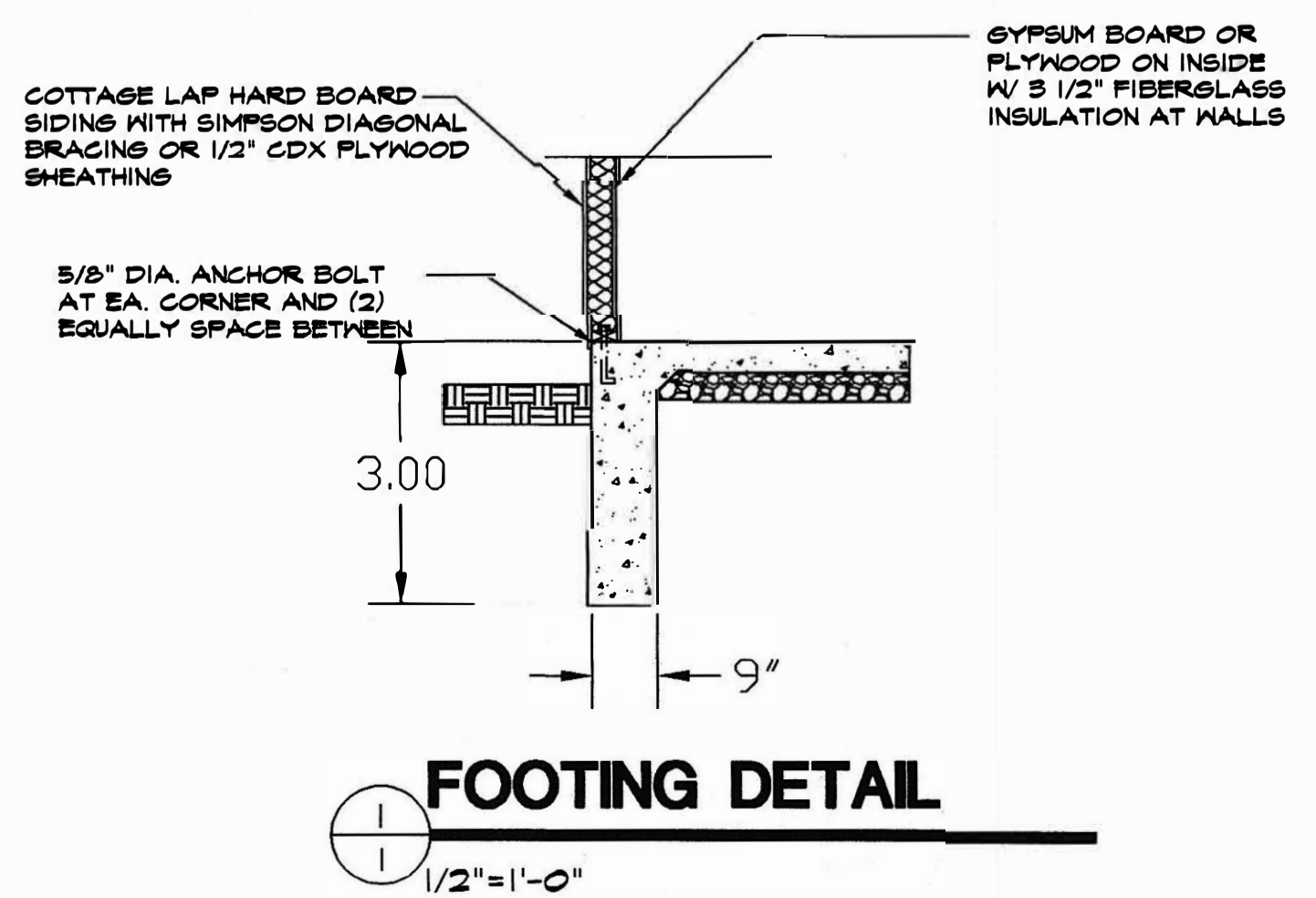
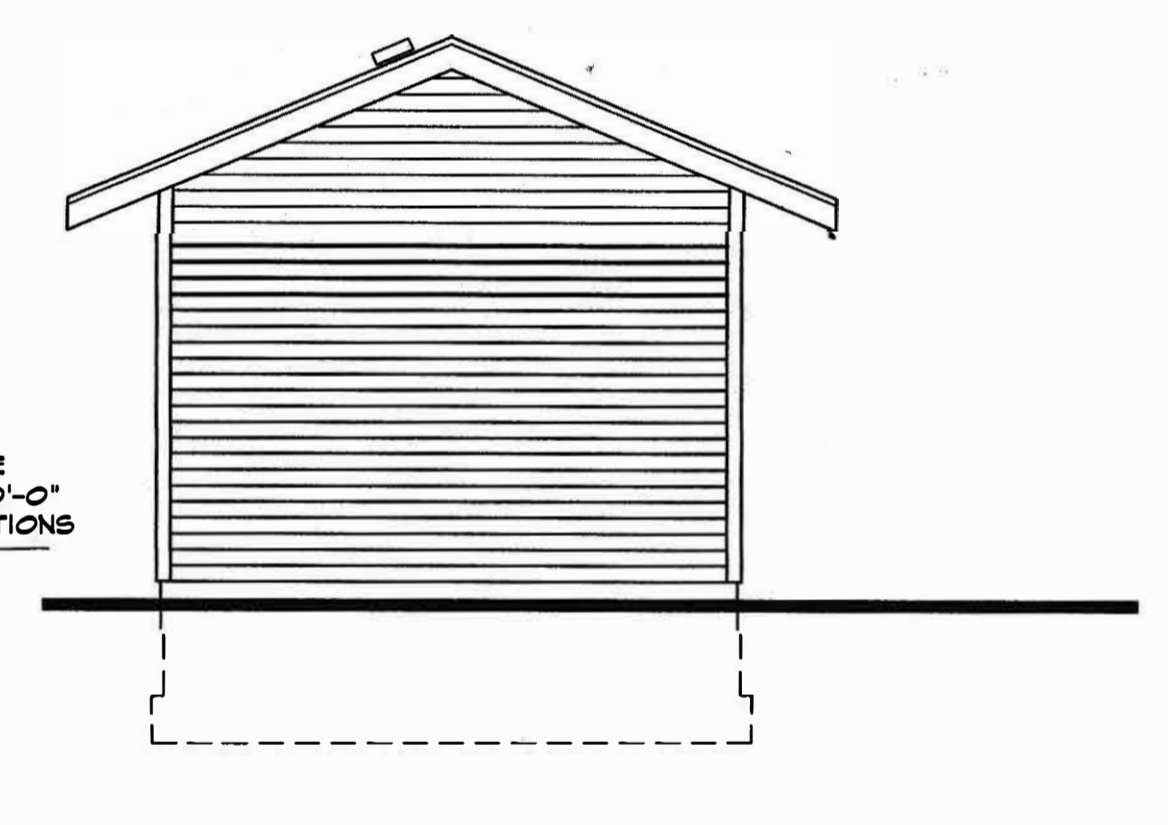
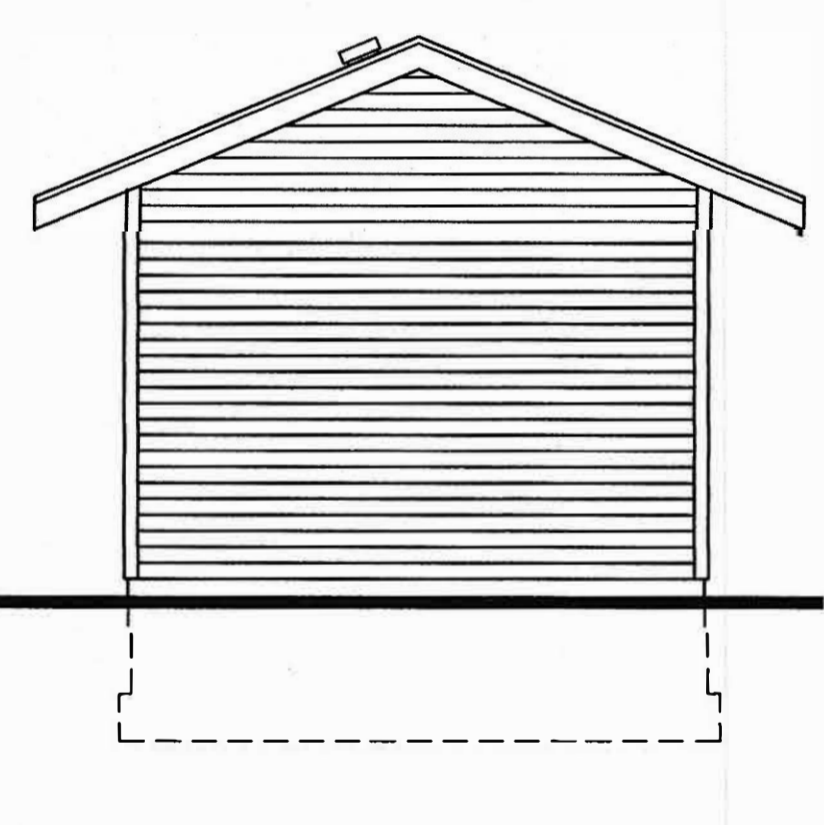
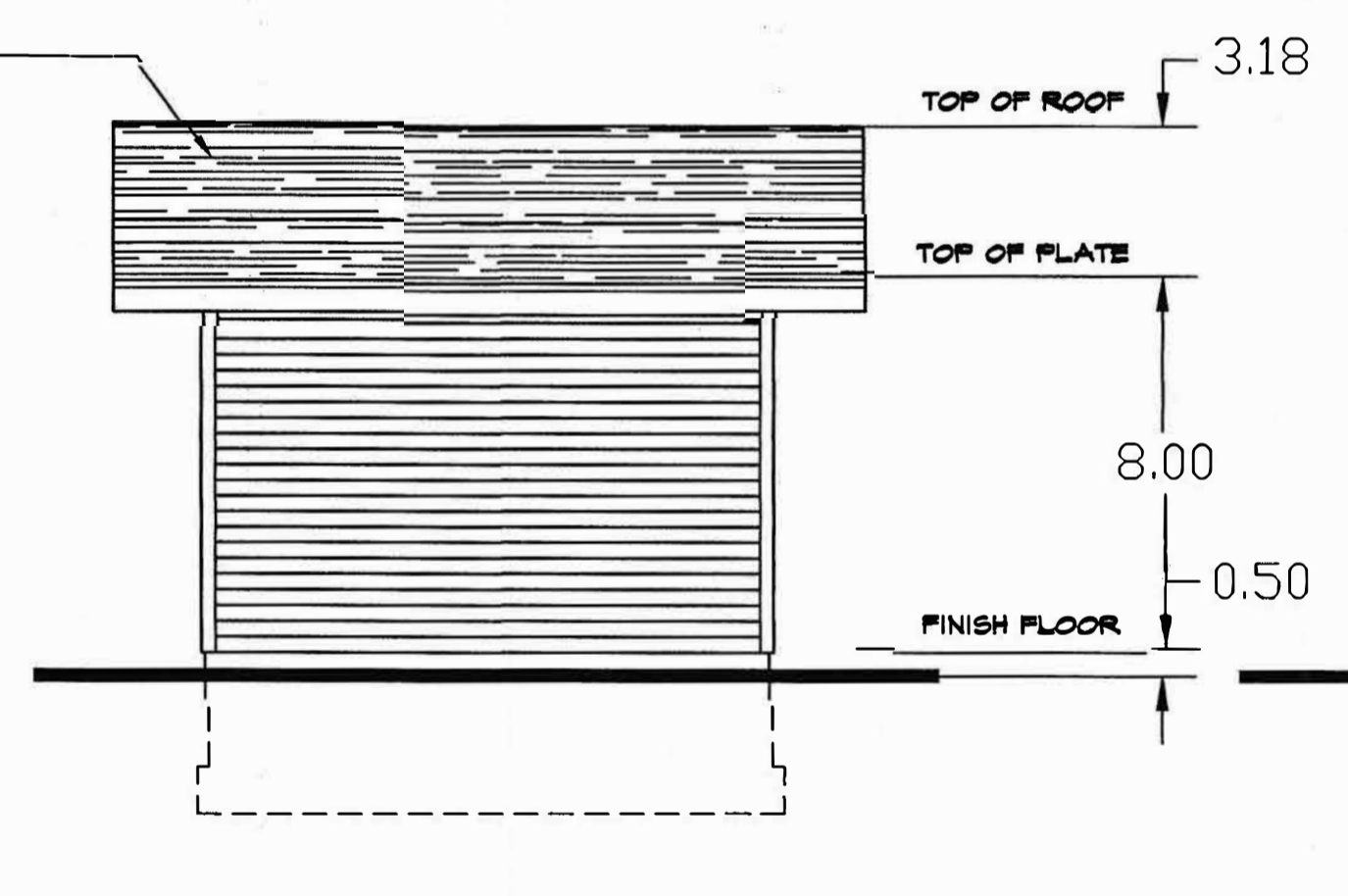
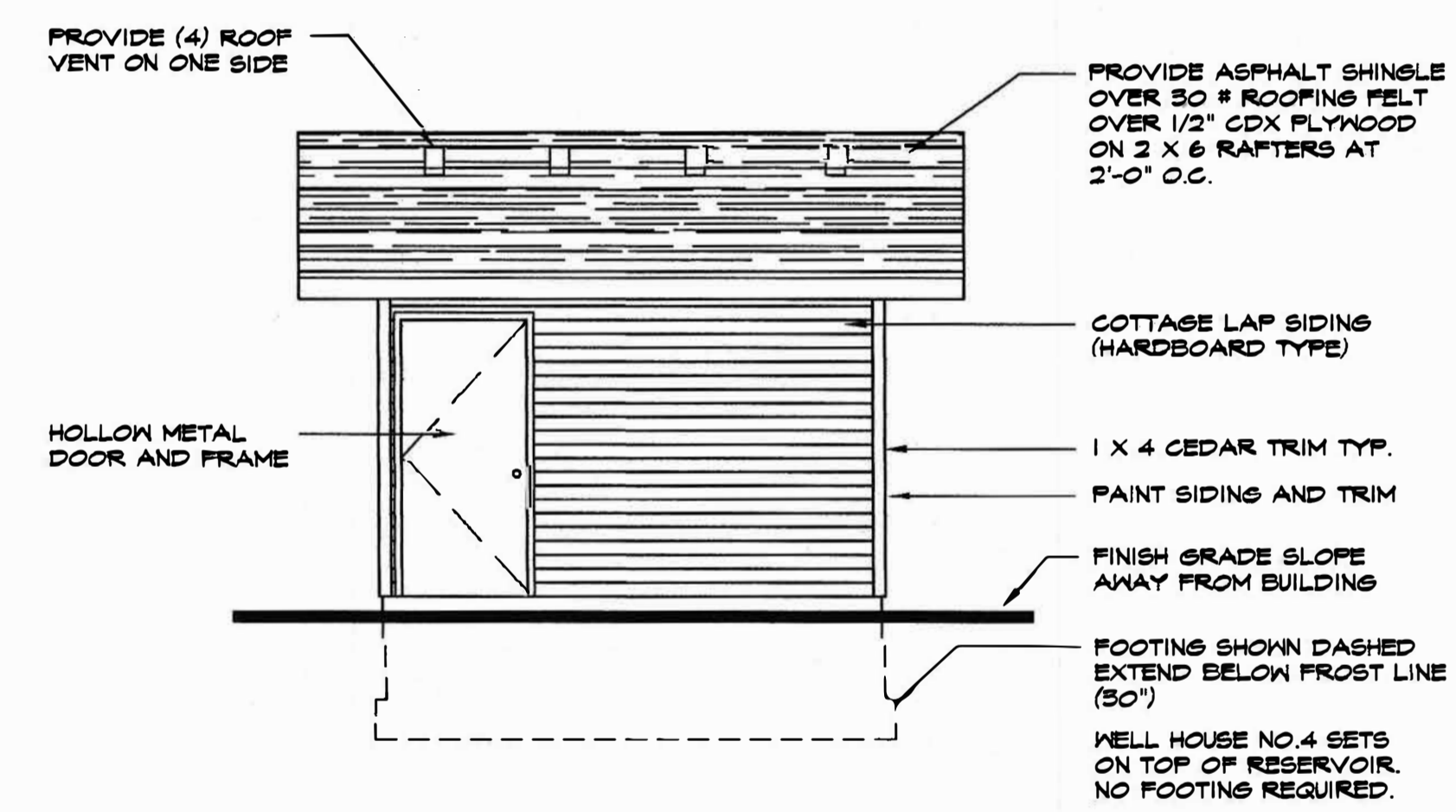
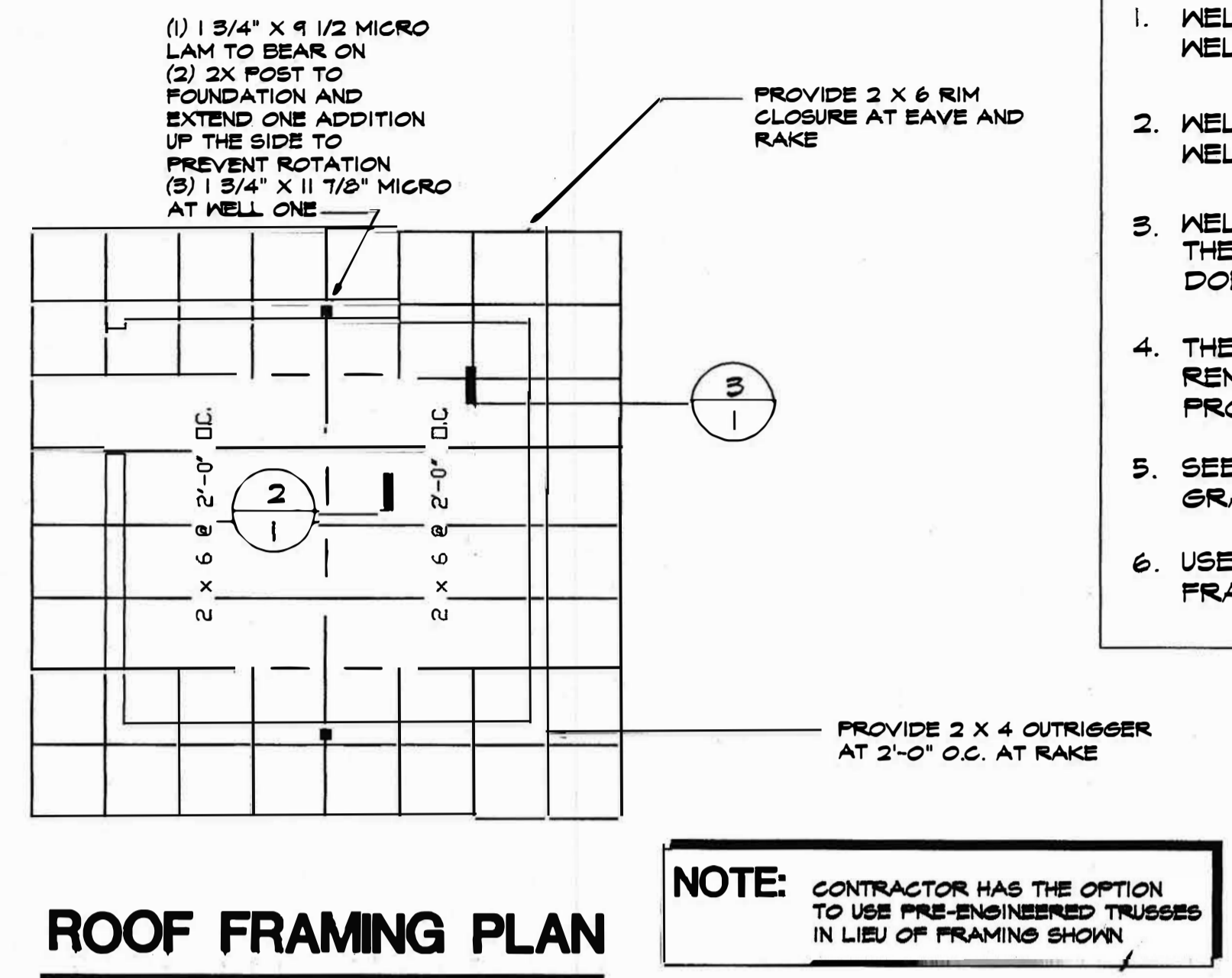
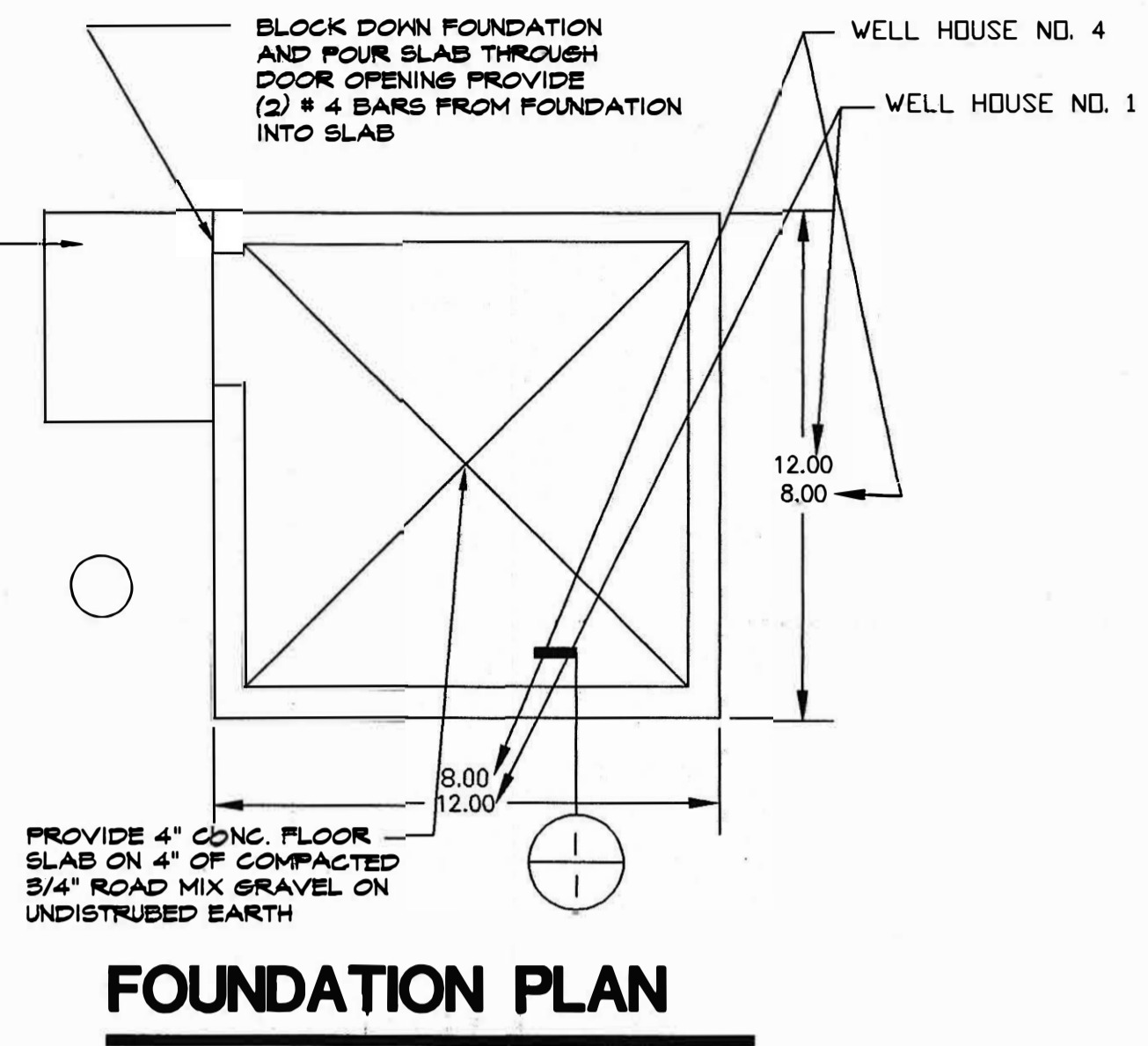
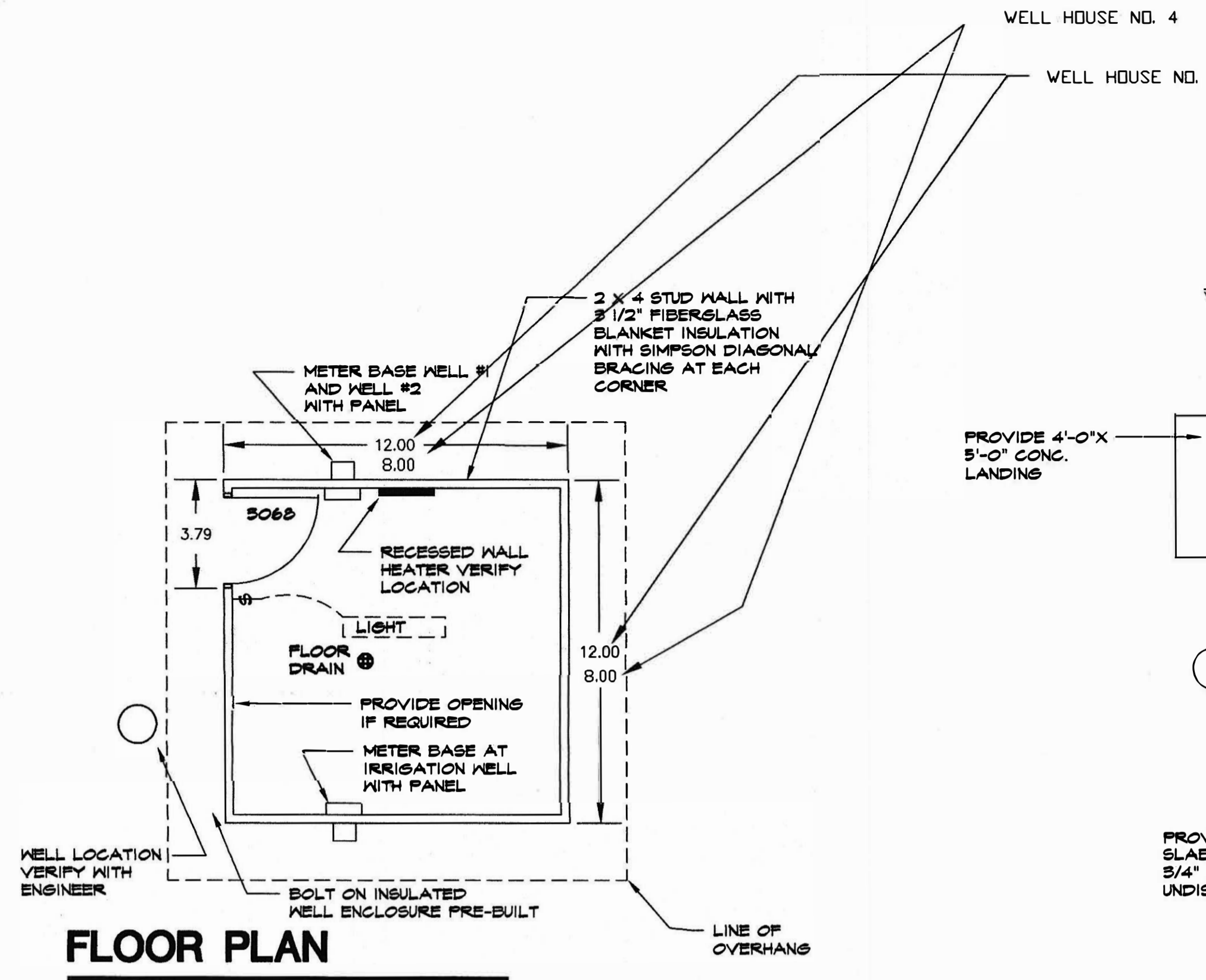



- ### PROJECT NOTES
- WELL HOUSE NUMBER ONE IS 12' x 12'. WELL HOUSE NUMBER 4 IS 8' x 8'.
 - WELL HOUSE NUMBER TWO AND THE IRRIGATION WELL HOUSE ARE TO BE 12'-0" x 12'-0"
 - WELL HOUSE NUMBER ONE HAS THE BOLT ON SECTION. WELL HOUSE NUMBER 4 DOES NOT HAVE A BOLT ON SECTION
 - THE BOLT ON SECTION IS INTENDED TO BE REMOVED WHEN WELL MAINTENANCE IS NEEDED. PROVIDE WEATHER STRIPPING TO SEAL.
 - SEE ATTACHED SITE PLAN FOR LOCATIONS GRADE SITE AS DIRECTED BY THE ENGINEER
 - USE DOUGLAS FIR LARCH No. 2 FOR ALL FRAMING MEMBERS



	
PAYETTE RIDGE ESTATES	
WELL HOUSE DETAILS	
JOHNSON ENGINEERING 9225 CHINDEN BLVD. SUITE J GARDEN CITY, IDAHO 83714 (208) 323-7563	SCALE: 1" = 4' DATE: 8/7/95 DESIGNED BY: R.B.J. SHEET: 13 OF 14 DWG. NAME: 1:PRWELLHS INDEX NO: