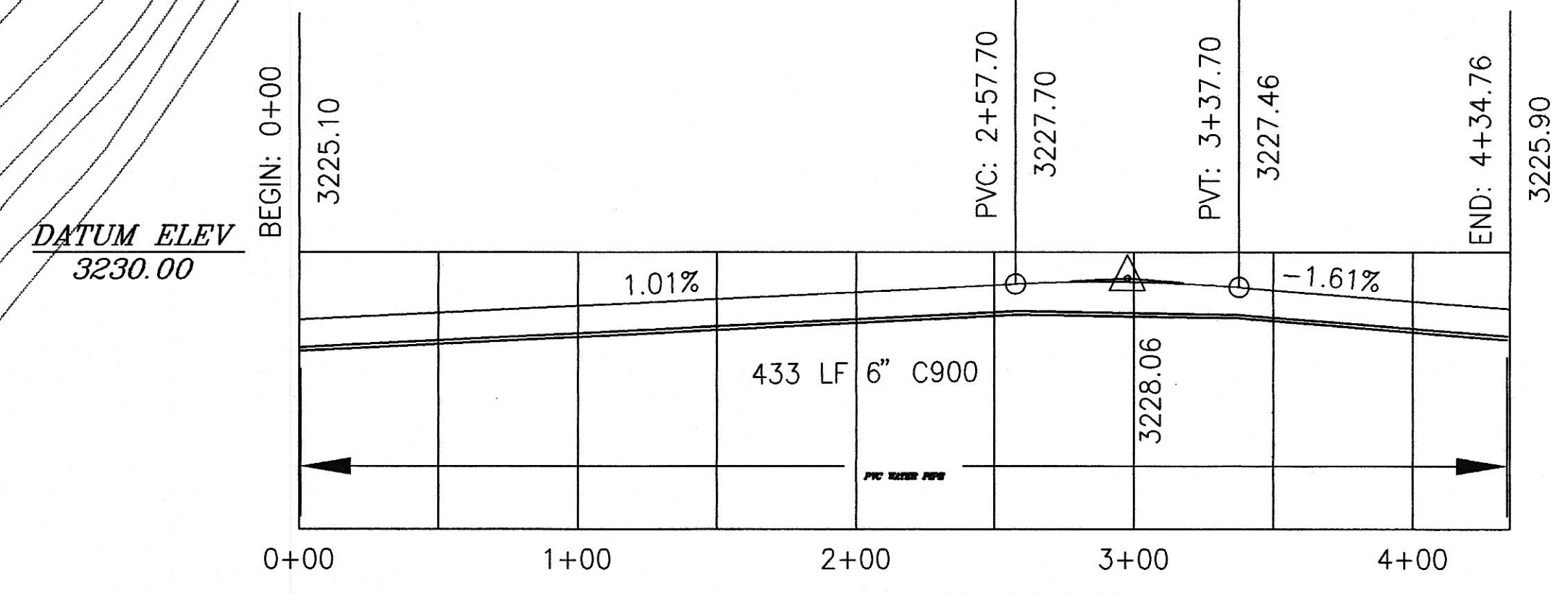


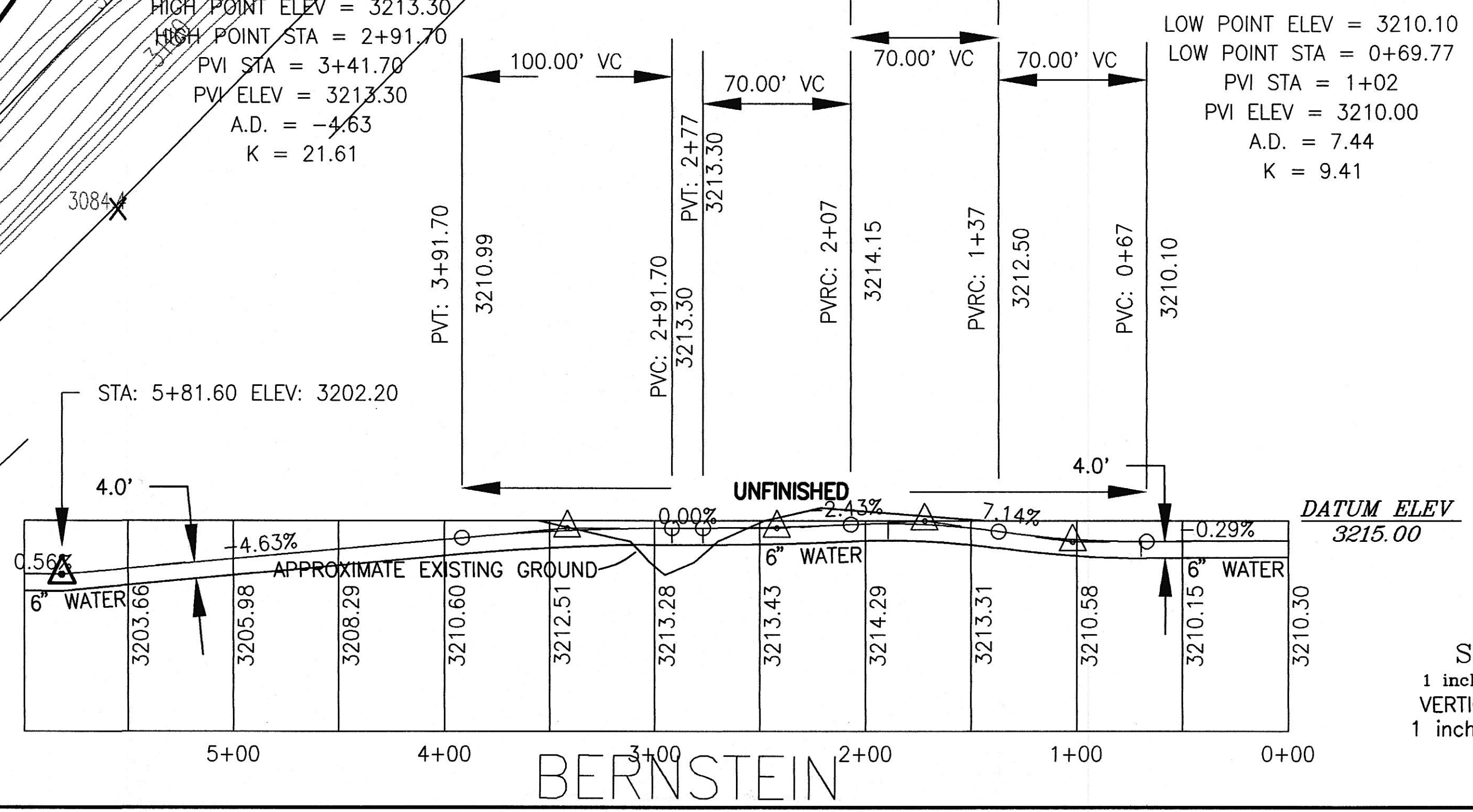
IVES COURT

HIGH POINT ELEV = 3227.85
 HIGH POINT STA = 2+88.55
 PVI STA = 2+97.70
 PVI ELEV = 3228.10
 A.D. = -2.61
 K = 30.62



LOWER BERNSTEIN & IVES

LOW POINT ELEV = 3213.30 HIGH POINT ELEV = 3214.37
 LOW POINT STA = 2+77 HIGH POINT STA = 1+89.24
 PVI STA = 2+42 PVI STA = 1+72
 PVI ELEV = 3213.30 PVI ELEV = 3215.00
 A.D. = 2.43 A.D. = -9.57
 K = 28.82 K = 7.31



NOTES:

6" WATER TO BE INSTALLED ON OR NEAR THE CENTER OF THE ROAD, MINIMUM 4' COVER THE SECTIONS WITH TWO WATER LINES WILL HAVE BOTH LINES IN THE SAME TRENCH SEE DETAIL SHEET FOR TWO LINE TRENCH DETAIL

WATER MAIN TO BE 6" C900 CLASS 150 PVC WATER PIPE
 WATER SERVICES TO BE 2" CLASS 200 GASKETED PVC



REVISED 10/27/95

PAYETTE RIDGE ESTATES	
STREET AND WATER PLAN LOWER BERNSTEIN & IVES	
JOHNSON ENGINEERING 9225 CHINDEN BLVD. SUITE J GARDEN CITY, IDAHO 83714 (208) 323-7563	SCALE: 1" = 50'
	DATE: 7/14/95
	DESIGNED BY: R.B.J.
	SHEET: 4 OF 14
DWG. NAME: 2-PAYETTE CONNECT	

SCALE
 1 inch = 50 ft.
 VERTICAL SCALE
 1 inch = 50 ft.